

# Corporate Fact Sheet

## Company Facts

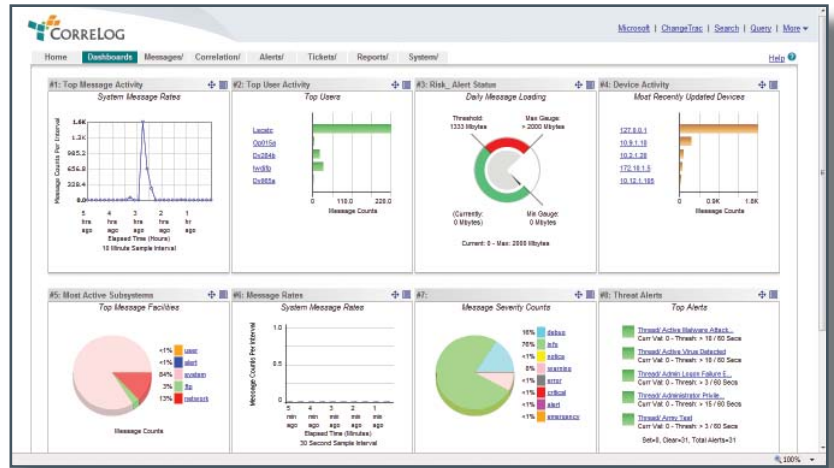
**Founded:** 2000  
**Headquarters:** Naples, FL  
**Employees:** 15  
**Operations:** North America, South America, EMEA, APAC  
**# Licensed Customers:** 250

## Management Team

**President & CEO**  
 George Faucher  
**CFO**  
 Phil Hargrove  
**Chief Architect and Co-founder**  
 Jeff Davison  
**VP Product Management**  
 Robert Humes  
**Marketing, PR, Analyst Relations**  
 Perri Marketing Communications, Inc.

## Timeline

2008: Founded, CorreLog Server Generally Available (GA)  
 2009: z/OS Mainframe agent GA  
 2009: McAfee SIA Partnership  
 2009: Allen Systems Group OEM  
 2010: State of Ohio contract awarded to CorreLog  
 2011: CorreLog version 5.0 (GA)  
 2011: MTS Allstream contract awarded for top 5 global broadline retailer  
 2011: Receives 5-star rating SC Magazine  
 2011: Inclusion in Gartner Magic Quadrant for SIEM vendors



## Strategic Partners

McAfee; Allen Systems Group (ASG) Software Solutions; Spectrum Systems; New Net Technologies, Ltd. (NNT); Fixmo, Inc.

## What is CorreLog?

CorreLog provides real-time log management, multi-platform security correlation and IT enterprise search. In addition to comprehensive SIEM capabilities, CorreLog goes further by employing automated event management and self-learning algorithms to alert on insider threats. For compliance, CorreLog delivers a comprehensive change management solution for tracking and reporting for compliance, security, and the health/performance of your infrastructure. CorreLog enhances oversight of your enterprise by analyzing data from multiple sources (mainframe, distributed and mobile devices) regardless of platform, OS, or location.

## Customers

More than 250 customers worldwide use CorreLog, including clients such as The State of Ohio, Collier County Florida, National Science Foundation, City of Fort Myers, Universal Studios, MTS Allstream, and Deloitte (Denmark).